

AASHTOWare BrD 6.8

---

*Feature Tutorial*

*WIZ2 – Simple Bridge Layout Wizard*

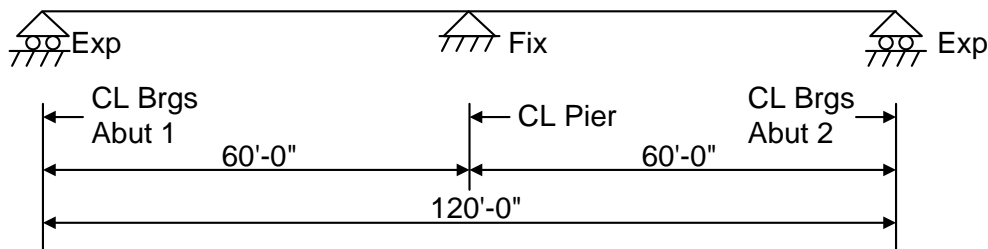
## WIZ2 - Simple Bridge Layout Wizard

This example uses the Simple Bridge Layout Wizard to create a new bridge and the underlying superstructure and substructure units.

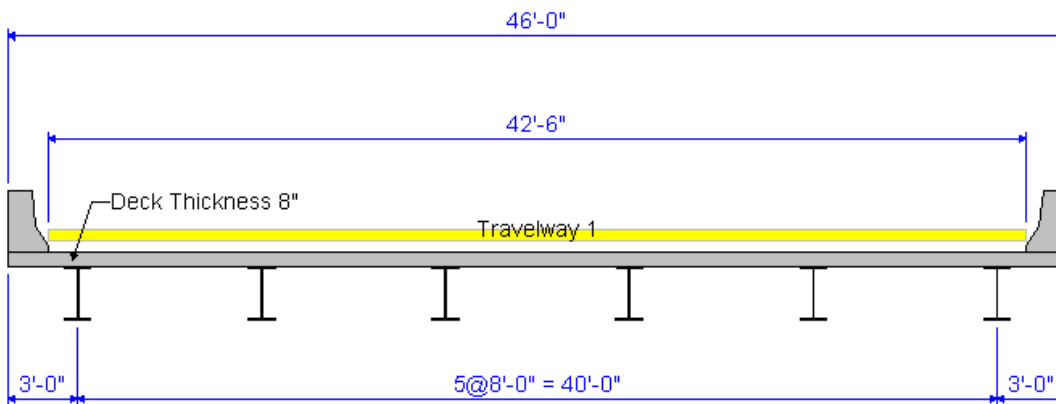
The Simple Bridge Layout Wizard creates the following:

- a bridge
- a superstructure definition
- a bridge alternative
- a superstructure
- a superstructure alternative
- piers

We will create the following bridge with the wizard.

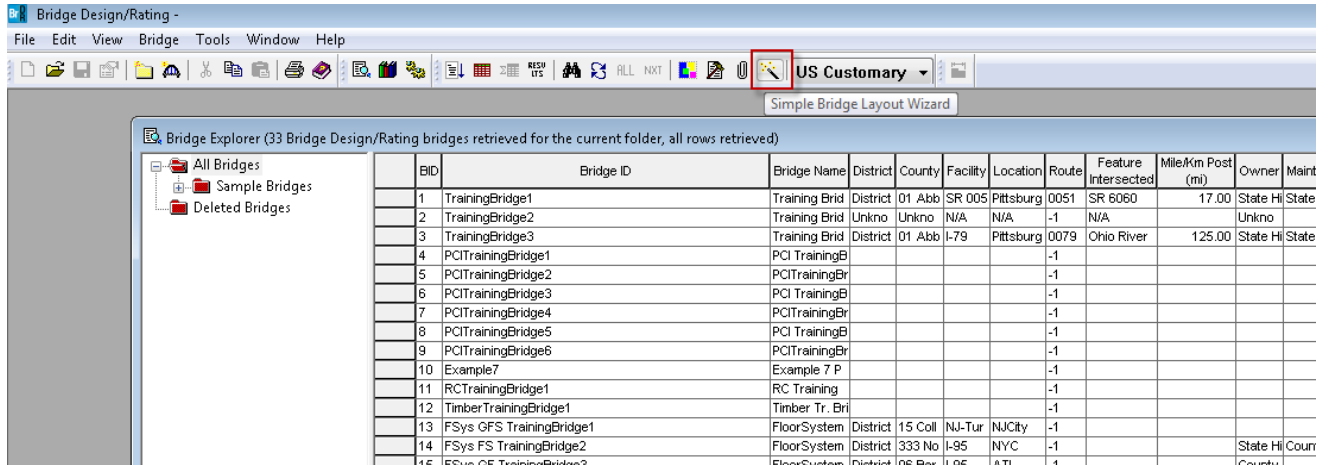


Span Arrangement

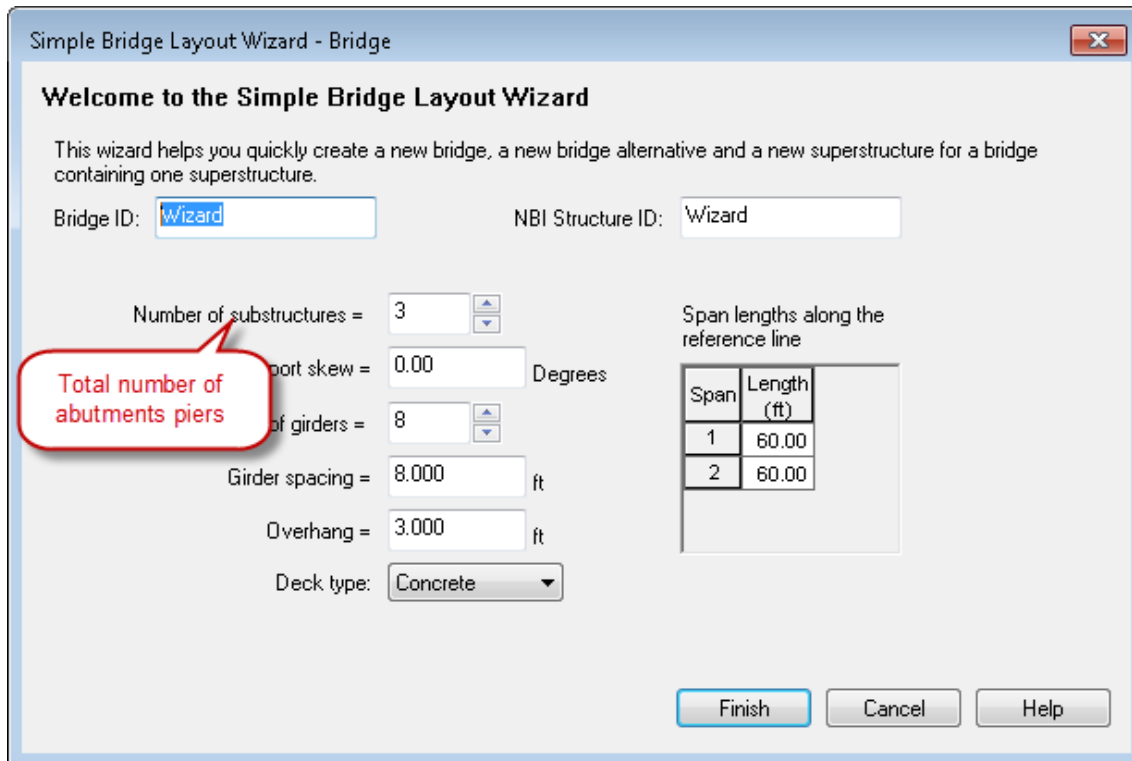


From the Bridge Explorer select the folder where you would like the new bridge to be created and then select the wizard button on the toolbar:

# WIZ2 - Simple Bridge Layout Wizard

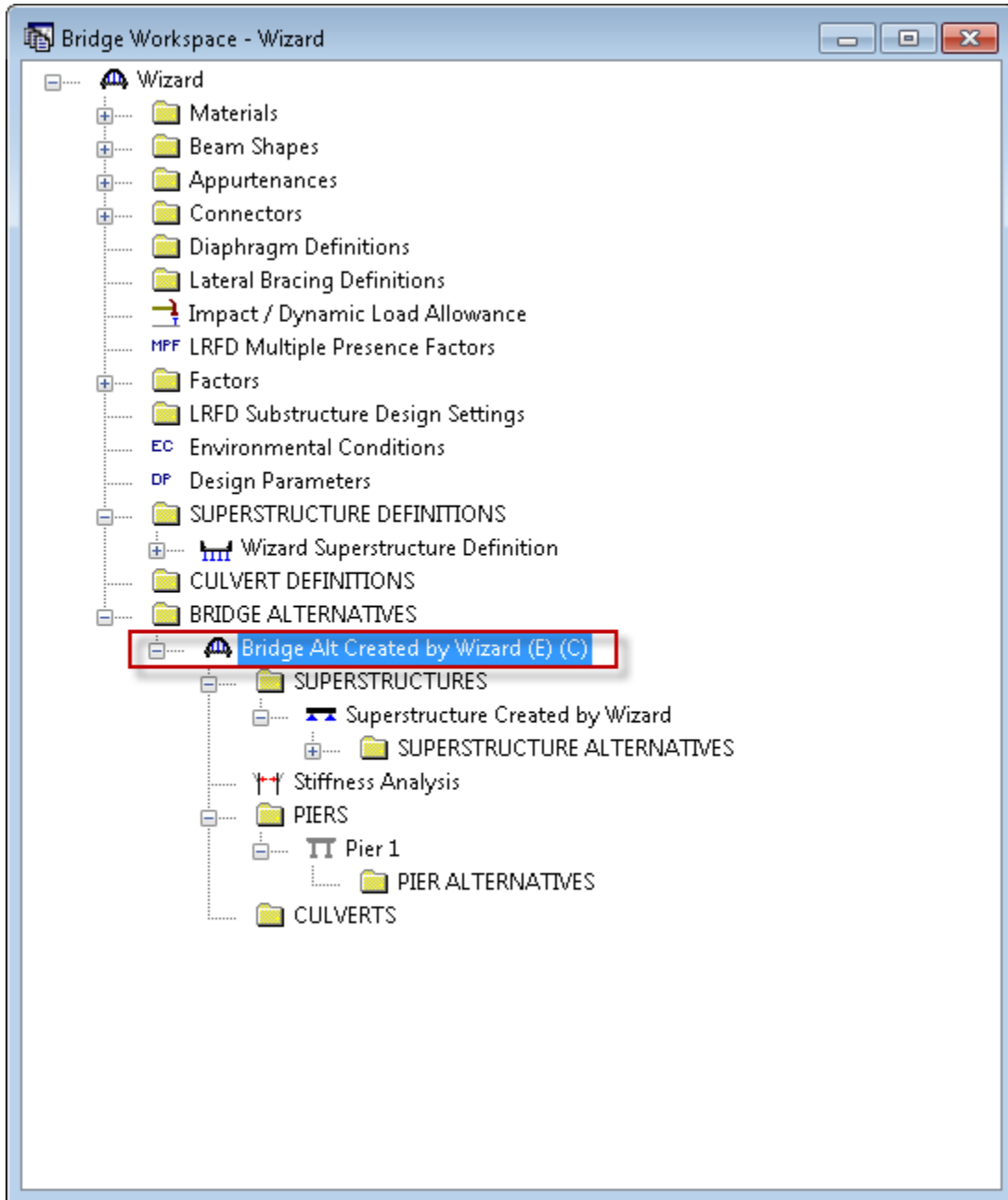


Enter the following data in the wizard:



## WIZ2 - Simple Bridge Layout Wizard

Click Finish and the new Bridge Workspace will appear as shown below:



# WIZ2 - Simple Bridge Layout Wizard

The following Bridge Alternative was created:

Bridge Alternative

Alternative Name: Bridge Alt Created by Wizard

Description Substructures

Description:

Horizontal curvature

Reference Line Length = 120.00 ft

Start bearing  End bearing

Starting Station = 0.00 ft

Bearing = N 90° 0' 0.00\" E

Global Positioning

Distance = 0.000 ft

Offset = 0.000 ft

Elevation = ft

Bridge Alignment

Curved

Tangent, curved, tangent

Tangent, curved

Curved, tangent

Start tangent length: ft

Curve length: ft

Radius: ft

Direction: ▾

End tangent length: ft

Superstructure Wizard... Culvert Wizard...

OK Apply Cancel

Bridge Alternative

Alternative Name: Bridge Alt Created by Wizard

Description Substructures

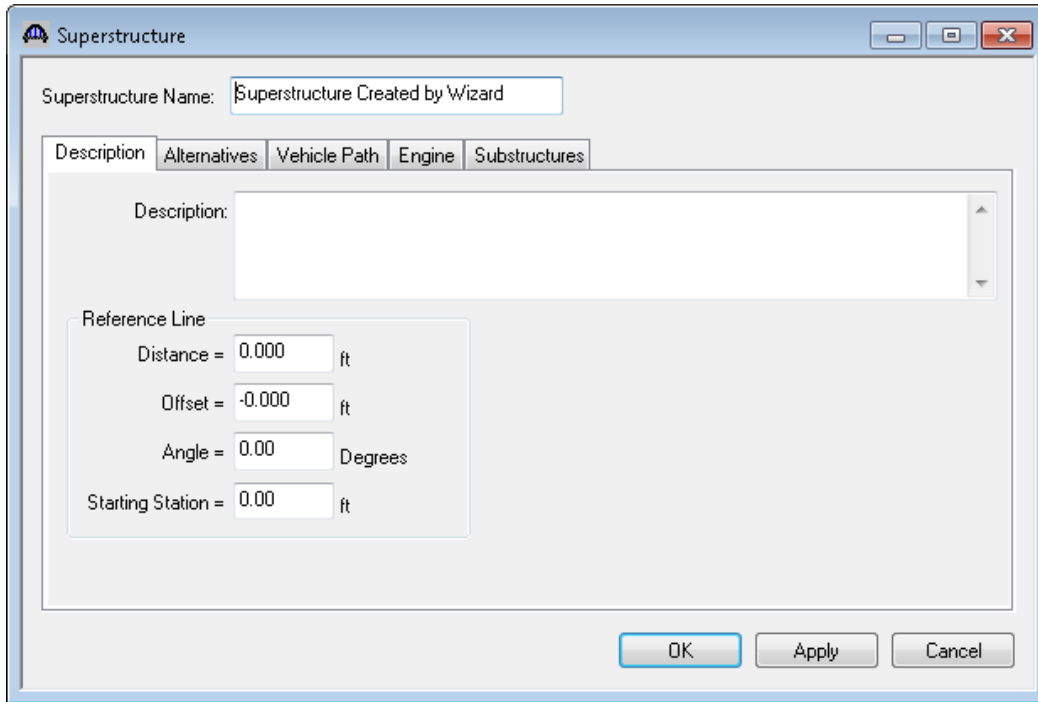
Substructure Unit Name	Station (ft)	Offset (ft)	Unit Type
Abutment 1	0.000	-0.000	Abutm ▾
Pier 1	60.000	-0.000	Pier ▾
Abutment 2	120.000	-0.000	Abutm ▾

New Duplicate Delete

OK Apply Cancel

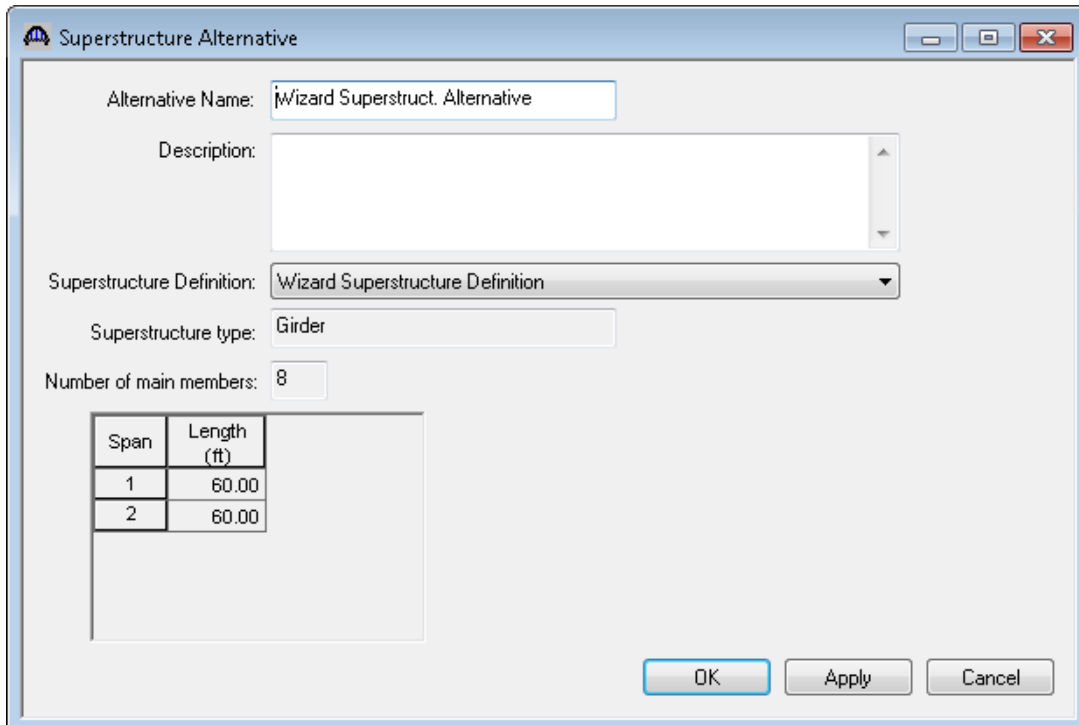
## WIZ2 - Simple Bridge Layout Wizard

The following Superstructure was created:



The screenshot shows a dialog box titled "Superstructure". At the top, there is a text field for "Superstructure Name" containing "Superstructure Created by Wizard". Below this is a tabbed interface with four tabs: "Description", "Alternatives", "Vehicle Path", and "Substructures". The "Description" tab is active, showing a large empty text area for "Description". Below the text area is a "Reference Line" section with four input fields: "Distance = 0.000 ft", "Offset = -0.000 ft", "Angle = 0.00 Degrees", and "Starting Station = 0.00 ft". At the bottom of the dialog are three buttons: "OK", "Apply", and "Cancel".

A Superstructure Alternative was created and the Superstructure Definition created by the wizard was assigned to this alternative.



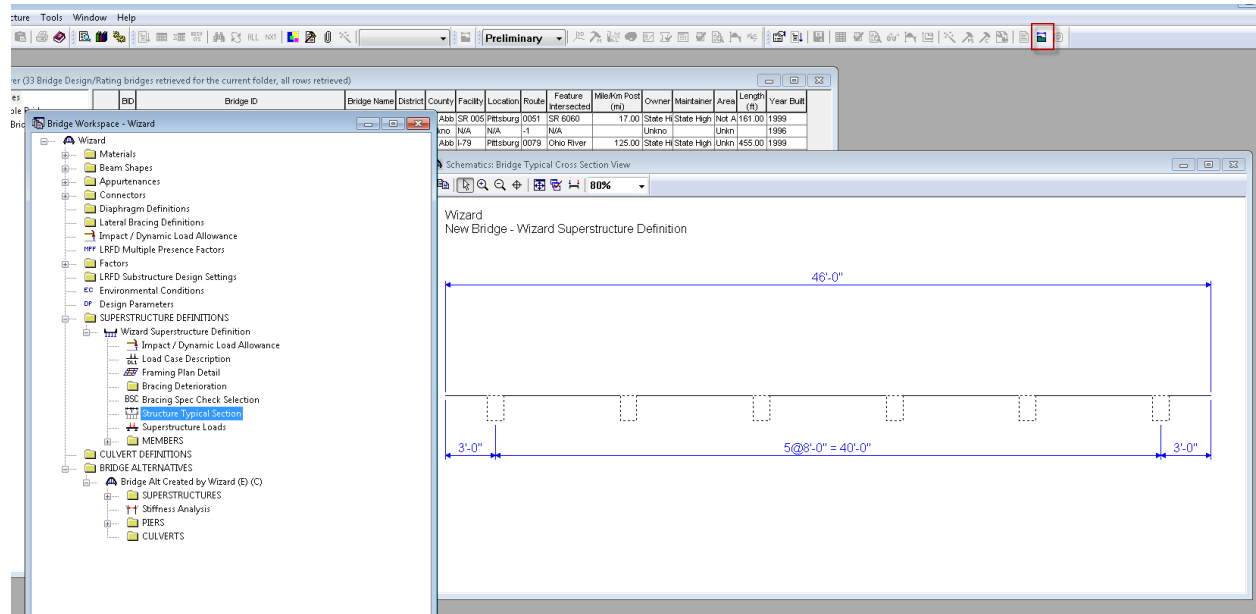
The screenshot shows a dialog box titled "Superstructure Alternative". It has a text field for "Alternative Name" containing "Wizard Superstruct. Alternative". Below this is a large empty text area for "Description". A dropdown menu for "Superstructure Definition" is set to "Wizard Superstructure Definition". Below that is a text field for "Superstructure type" containing "Girder". A text field for "Number of main members" contains "8". At the bottom, there is a table with two columns: "Span" and "Length (ft)".

Span	Length (ft)
1	60.00
2	60.00

At the bottom of the dialog are three buttons: "OK", "Apply", and "Cancel".

## WIZ2 - Simple Bridge Layout Wizard

The Superstructure Definition that was created contains the framework of the definition. You must complete this framework by describing the deck, parapets, member alternatives, etc.



You must also create a Pier Alternative for the pier.

